



MODERN ROAD RESURFACING SOLUTIONS



Changing the future of road resurfacing

From start to finish, our industry-leading solutions provide you with a better way to accomplish your road resurfacing jobs. We can help you save time, lower costs, and increase safety – while improving your performance and the results you deliver.

We offer the most advanced paving and milling solutions available starting with patented sonic tracking technology, the world's first non-contacting sonic averaging system, and now vehicle-mounted scanners that collect data at speed without the need for lane closures.

Paving workflows have never been this streamlined and safe, and surfaces are smoother than ever. We've been listening to you, and developing answers to your problems. Welcome to the modern method for road resurfacing.

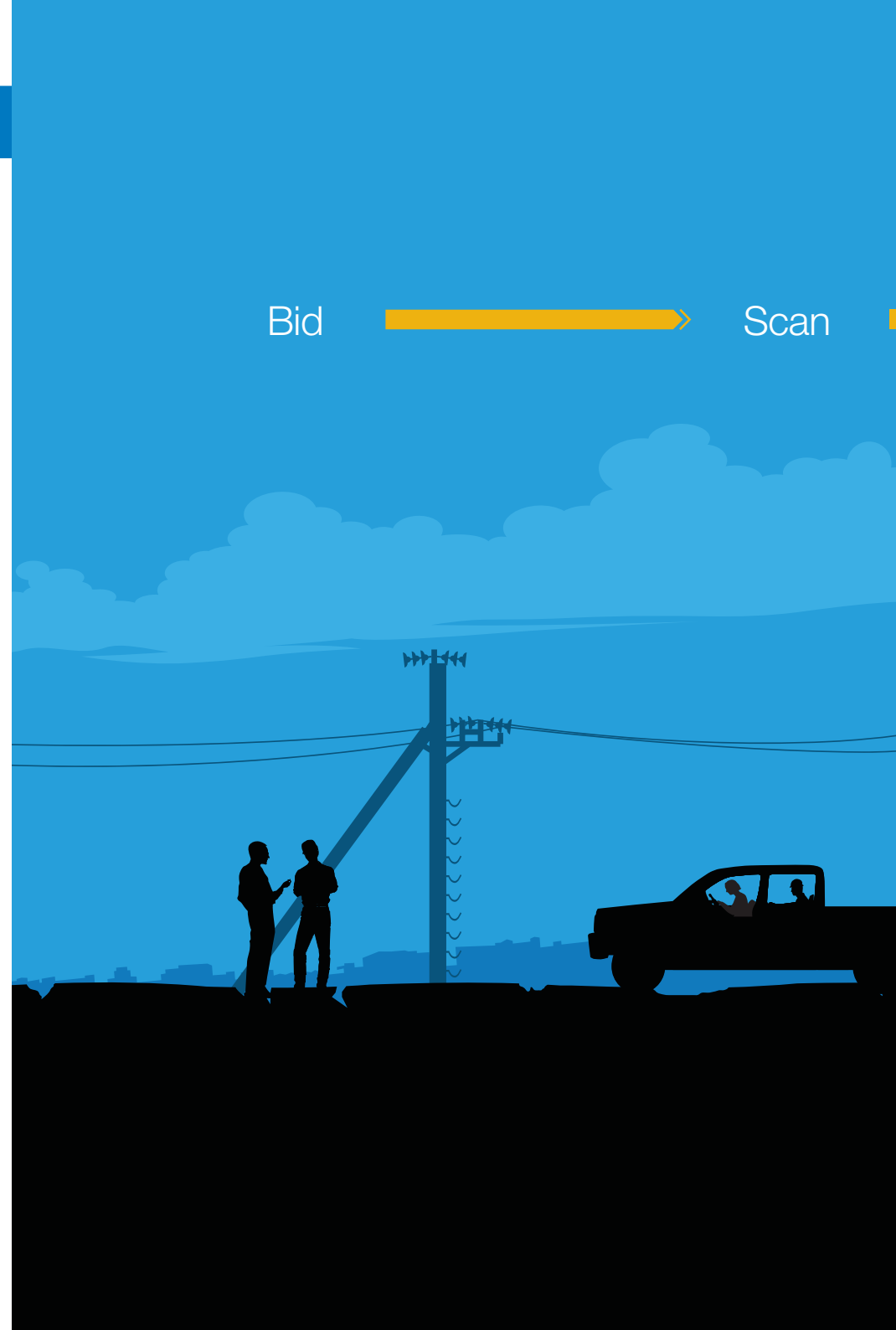
Save time. Lower costs. Deliver results.

WITH YOU ALL THE WAY.

Bid



Scan



Design

Control

Finish



Successful projects start with successful bids

Stay ahead of the game, get more work, and make that work more profitable. We offer solutions to help you submit bids in less time, with higher accuracy.

Quickly prepare detailed estimates

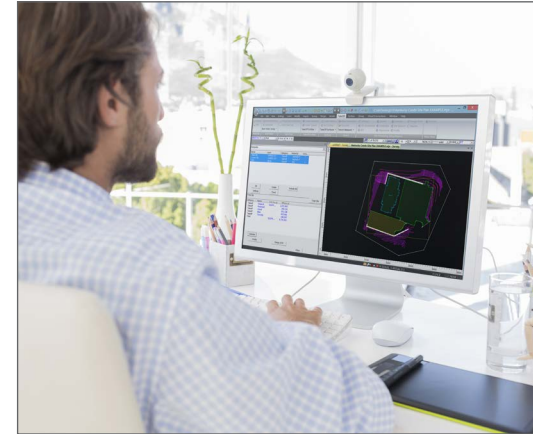
Our software solutions help you dramatically improve speed and accuracy throughout your bidding process.

Better calculate direct costs

You can estimate precisely how much material you will need, with the ability to instantly update based on any changes that come up.

Stay connected the whole way

Get secure web services to organize all your data and generate customizable reports every step of the way.



Visit topconpositioning.com/bid to learn more.

Software Solutions

A full featured toolset for better bidding

- Collect existing conditions quickly
- Forecast time, equipment, and materials usage
- Design, schedule, and map a complete road plan
- Generate customizable volume and cost reports
- Create visually impressive 3D presentations



Scan smarter and faster

We've made surveying the road surface as simple as pressing the start button on your laptop. With our easy-to-operate solutions you'll save time, lower costs, and increase safety.

Quick, accurate results

Scan miles of road in short time, collecting detailed road surface data without the need for costly lane closures or re-work.

Mobile

Our innovative systems can be mounted on most vehicles in a matter of minutes.

Aerial

Unmanned Aircraft Systems (UAS) solutions deliver overhead views for challenging environments.

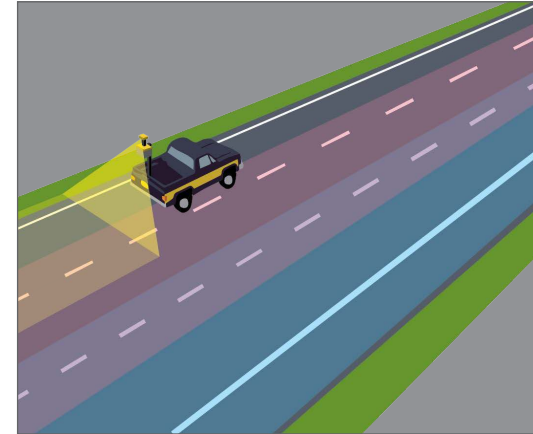
Safely collect at speed

Say goodbye to the days of lane closures, re-routing of traffic, and exposure of the survey crew to danger. Gathering extensive surface data is now easy and safe to accomplish.

Harness the power of your data

All of our scanning solutions come pre-loaded with easy-to-use software. The point data management tools are so efficient, you can be paving or milling the next day.

Visit topconpositioning.com/scan to learn more.



Data Collection in the fast lane

- Survey and pave the next day
- Scan at up to 100x per second
- Collect data safely from the cab, without lane closures



Smooth planning leads to smooth roads

You get all the tools you need to create anything from a very basic to a sophisticated road design. Our resurfacing software gives you powerful tools necessary for paving or milling projects, and is far easier to use than other products on the market.

Visualize the road you want

You can easily create and manage large point cloud information to best represent current surface and site conditions. Our software also provides you with the power to perform fast calculations, cross slopes, transitions, smoothing, lift/lower, and more.

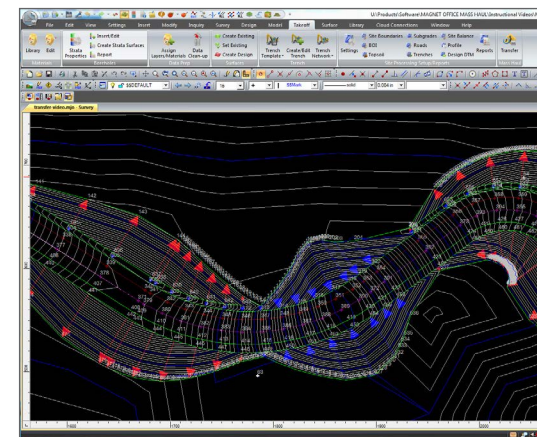
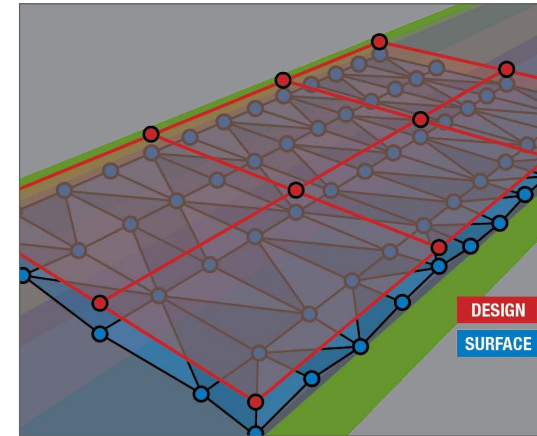
Put your plans in motion

Designing a new road surface with tight rideability specifications while maintaining the projected thickness yield as well as staying within thickness tolerances takes a fraction of the time that it does with the other systems. Our dedicated resurfacing software offers unique algorithms for a simple running average or complex road designs – all while giving you full control of material management, including updates on tonnage calculated on the fly.

Connect seamlessly

Once the design is complete, exporting your plan becomes as simple as clicking a button. You can instantly deliver your files directly to your milling and paving control systems on the project site using our global web services.

Visit topconpositioning.com/design to learn more.



Complex, 3D road design made simple

- Develop CAD plans, convert to 3D models
- Produce fast calculations, cross slopes, transitions, smoothing, milling, lifts, and more
- Export files directly to your milling and paving control systems



Stay productive and ahead of schedule

Be on top of every element of your project site. Our fully-integrated paving and milling solutions give your team the power to execute your plans flawlessly.

Get excellent results automatically

Machine automation has never been easier, faster, and more accurate. Precise thickness control with compensation for differential compaction is delivered through machine control guidance in the first pass – ultimately reducing the need for multiple lifts.

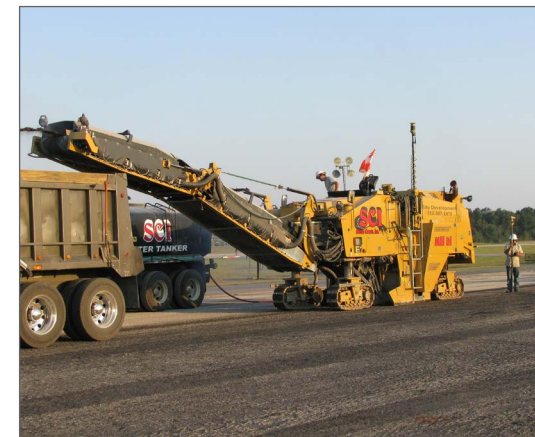
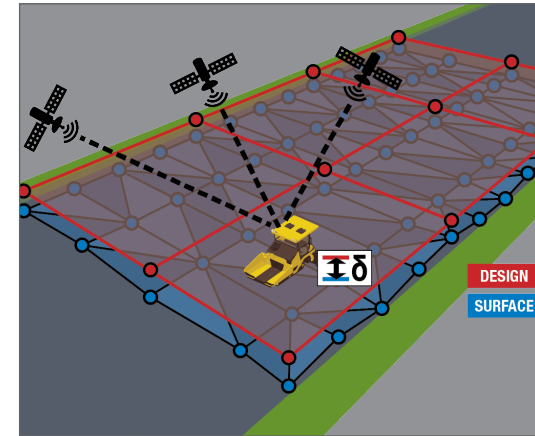
Optimize materials and cut costs

On the paver or milling machine itself, the design surface is used as a reference to automatically control the screed or drum and precisely place or remove material in a single pass. You apply only the amount of material needed, saving time and money.

Kick errors to the curb

Significantly reduce errors, both human and mechanical with technology that gives you high vertical repeatability. At the project site your results are real and immediate, you can continuously pave or mill without extended time delays.

Visit topconpositioning.com/control to learn more.



Variable depth milling and variable thickness paving

- Reduce number of lifts required to reach finish design
- Mill one time and deliver a smooth surface
- Increase productivity and mill only what's necessary
- Manage materials to stay within acceptable yields
- Account for differential compaction as the surface dictates



Wrap up jobs as strong as you start them

When it comes time to close your projects, hit the finish line running ready for the next job. Our solutions allow you to stay productive and be ahead of schedule – greatly increasing your ability to win the bonus.

The smart way to finish

We offer “intelligent compaction” ready systems that meet all DOT and government standards. Save time and money by taking all the guesswork out and getting the best results with the minimal amount of passes.

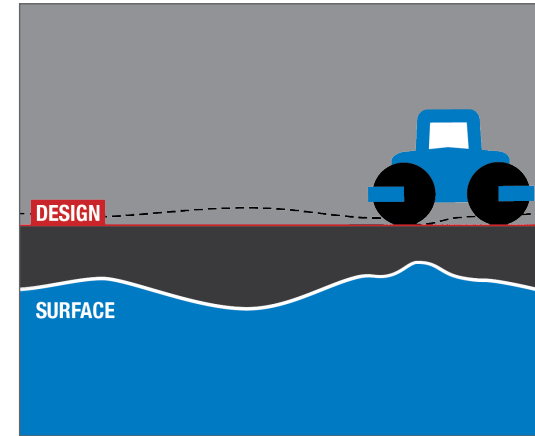
Real-time quality control

With our integrated systems all project data is available to every project stakeholder, all the time. You can register each and every pass and connect the compactors to all other machines on the site. The data is processed in real-time for stiffness, density, and temperature control, increasing your efficiency and quality.

End the job right, every time

Whether you’re looking for information on labor, materials, or to show how you’ve met all client and government standards, we make it easy to generate customizable reports for the information you need. You can also track, archive, and export all project data for every job, and revisit the details on demand for future bids or jobs.

Visit topconpositioning.com/finish to learn more.



Intelligent compaction

- Collect and use data in real time for stiffness, density, and temperature control
- Get consistent results through constant feedback into the system
- Deliver accurate surface stiffness and temperature values as well as the number of passes through reports to meet regulatory standards





With You All The Way

No matter what size your company is, what role you have, or what phase of a project you are working on — we've got the solutions and services to help you get the job done right the first time.

Topcon Enterprise

We're dedicated to helping you solve your workflow challenges, and get the most out of your Topcon solutions.

Topcon Enterprise gives you access to a large collection of online materials, software and firmware updates, current publications, tech tips, and guidance from the experts - all from your computer or mobile device.





www.topconpositioning.com

FIELDWORK

Systèmes de guidage d'engins et systèmes de relevé

—  **TOPCON** | AUTHORIZED DEALER —

Bleichelstrasse 22 | CH-9055 Bühler | +41 71 440 42 63 | info@fieldwork.ch